



Sol. Ind. y Soldadura 2008, S.L.U.
C/ Rio Tajo, Nave 1
Santa Olalla 45530 – TOLEDO
Tf. +34 925 797 688 – FAX +34 925 797 064



American Welding Society
INTERNATIONAL AGENT

Hand - held electromagnetic yoke **REM 42**



Cat. No. 4808 - 01 – 10

Hand - held electromagnetic yoke **REM 42** is to be used to magnetize an article longitudinally. If magnetic particles are applied sparingly at the areas between poles, indications of surface discontinuities are easily seen. Two - coil yoke REM 42 is designed and produced for the heaviest industrial environment, rigid enough.

Power supply of yoke is from separating safety transformer, so that yoke's electrical installation is galvanic separated from electric net. For prolonged working life of switch is the power switched by semiconductor.

REM 42 Technical Parameters:	
Pole spacing	130 mm
Intensity H_t - EN ISO 9934 - 3	3,8 kAm ⁻¹
Lifting force	> 12 kg
Duty / Load factor	50 % / 1 min.
Input	400 / 1000 VA
Supply	1+N+PE 230 V / 50 Hz
Mass of yoke	3,6 kg (without cable)
Mass of transformer	5,5 kg
Electric protect EN 60529	IP 54

Product complies with standards:

ASME Code, V. Art 7, ASTM E 709, ASTM E 1444, ASTM E 138 / MIL I6868D, EN 1290, NAVSHIPS 250 - 6373; EN ISO 9934 - 3



www.solysol.com.es

info@solysol.com.es

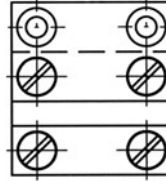
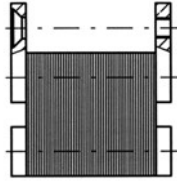




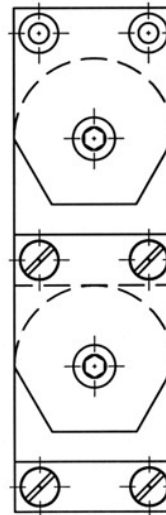
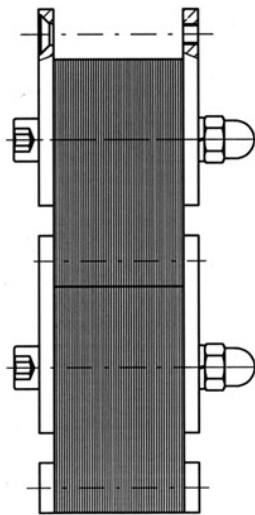
Sol. Ind. y Soldadura 2008, S.L.U.
C/ Rio Tajo, Nave 1
Santa Olalla 45530 – TOLEDO
Tf. +34 925 797 688 – FAX +34 925 797 064



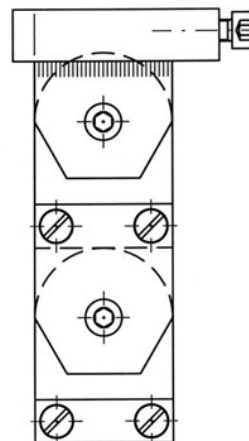
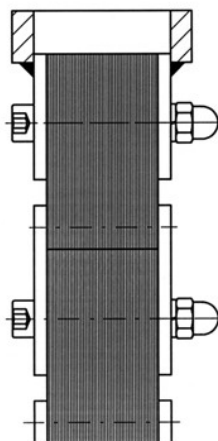
American Welding Society
INTERNATIONAL AGENT



Protective Pole Contact for Yoke REM 230, One Pair, Short, Rigid.
Cat. No. 4808-01-01



Adjustable Pole Contact Legs, One Pair.
Cat. No. 4808-01-02



Quick Mounting Adjustable Pole Contact Legs, One Pair.
Cat. No. 4808-01-03



www.solysol.com.es

info@solysol.com.es

