



## YOKE REM 230

A yoke **REM 230** may be used to magnetize an article longitudinally. If magnetic particles are applied sparingly at the areas between poles, indications of surface discontinuities are easily seen.



**Product compiles with standards:**

ASME Code, V. Art 7, ASTM E 709, ASTM E 1444, ASTM E 138 / MIL I6868D, EN 1290, NAVSHIPS 250 - 6373

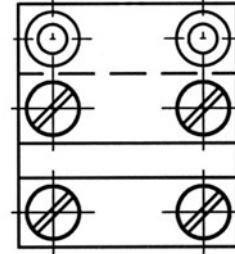
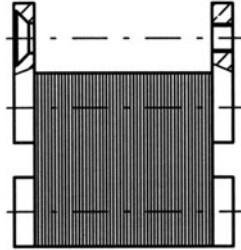
Technical parameters:	
Pole spacing	130 mm
Intensity H - DIN 54131	4,0 kAm <sup>-1</sup>
Lifting force	> 12 kg
Load factor	75 % or max. 15 min.
Input	480 / 1000 VA
Supply	230 V / 50 - 60 Hz
Weight	3,6 kg (without cable)



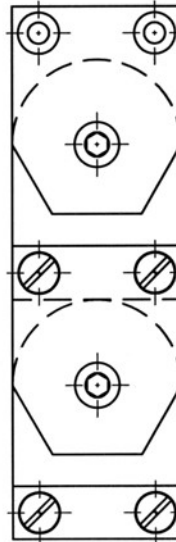
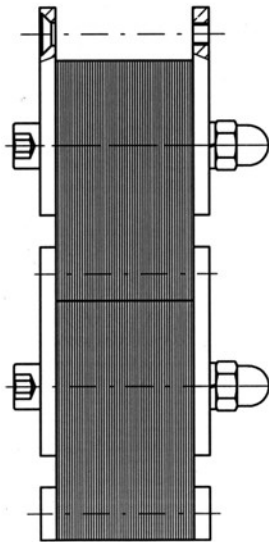
Sol. Ind. y Soldadura 2008, S.L.U.  
C/ Rio Tajo, Nave 1  
Santa Olalla 45530 – TOLEDO  
Tf. +34 925 797 688 – FAX +34 925 797 064



American Welding Society  
INTERNATIONAL AGENT



**Protective Pole Contact for Yoke REM 230, One Pair, Short, Rigid**  
Cat. No. 4808-00-01



**Adjustable Pole Contact Legs, One Pair**  
Cat. No. 4808-00-02



[www.solysol.com.es](http://www.solysol.com.es)

[info@solysol.com.es](mailto:info@solysol.com.es)

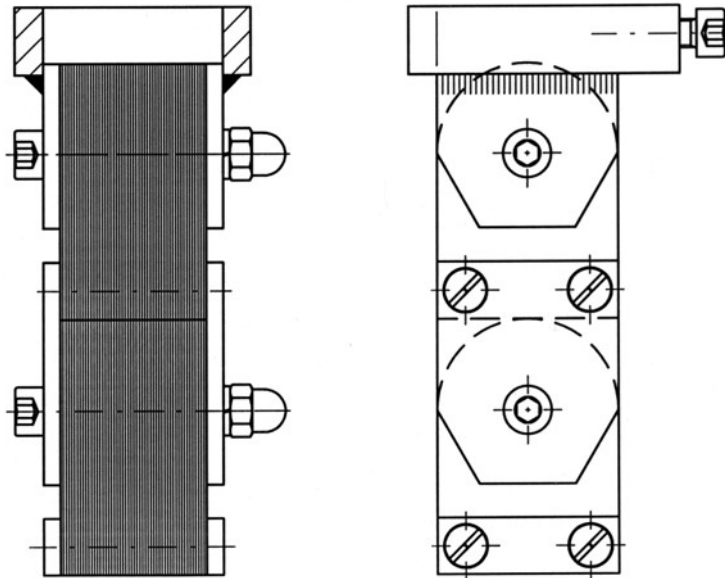




Sol. Ind. y Soldadura 2008, S.L.U.  
C/ Rio Tajo, Nave 1  
Santa Olalla 45530 – TOLEDO  
Tf. +34 925 797 688 – FAX +34 925 797 064



American Welding Society  
INTERNATIONAL AGENT



**Quick Mounting Adjustable Pole Contact Legs, One Pair**  
Cat. No. 4808-00-03

Cat. No.: 4808-00-04 - Durable Transport Leather Case for REM Yoke



[www.solysol.com.es](http://www.solysol.com.es)

[info@solysol.com.es](mailto:info@solysol.com.es)

