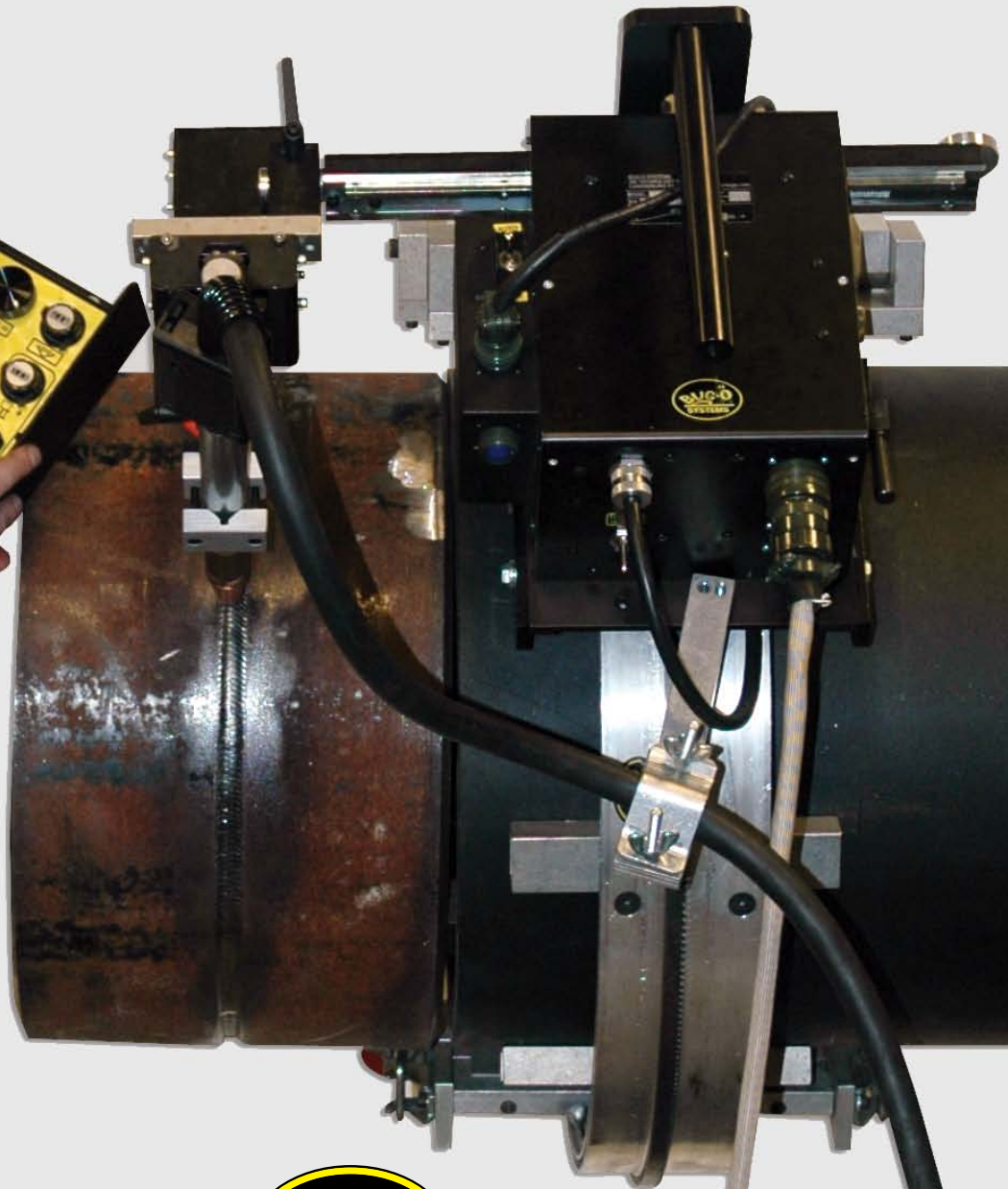


UNIVERSAL BUG-O-MATIC

Flexible, Compact Drive and Oscillator
Combination for Welding in All Positions



Bug-O Systems

Automated Cutting and Welding Systems

Bug-O Systems is guided by honesty, integrity and ethics in service to our customers and in all we do.

412-331-1776

www.bugo.com

400 AMP U.S.A.



UNIVERSAL BUG-O-MATIC



The **Universal Bug-O-Matic** (BUG-5700, BUG-5702 and BUG-5704) is a compact unit which combines a powerful drive and precision oscillator all in one housing. The unit is lightweight and can easily be handled by one operator. The machine works in all positions and can be used for vertical and overhead welds. By simply changing the carriage, the unit can work on rigid rail, semi-flex rail, hi-flex rail or complete ring rails. The opening mechanism of the carriage allows the unit to be released or installed anywhere on the rail.

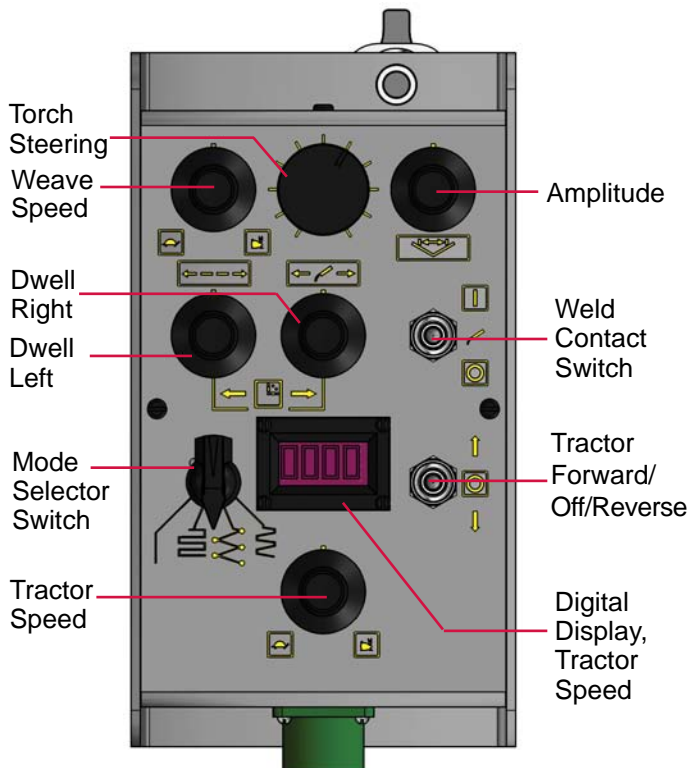
While welding, adjustments can be made to the travel speed, amplitude and oscillation speed as well as dwell left and dwell right. While the machine is welding, the torch can be guided by a separate steering knob. Closed loop feedback and dynamic braking allow the Bug-O-Matic to make precise starts, stops and travel at a constant speed.

The **Universal Bug-O-Matic with Auto Height Control** (BUG-6550, BUG-6552 and BUG-6554) has the same functions as the Universal Bug-O-Matic, but in addition features amperage sensing automatic torch height adjustment which maintains constant torch to work distance. The Height Control features a motorized slide which provides a total of 2" (51 mm) of vertical travel.

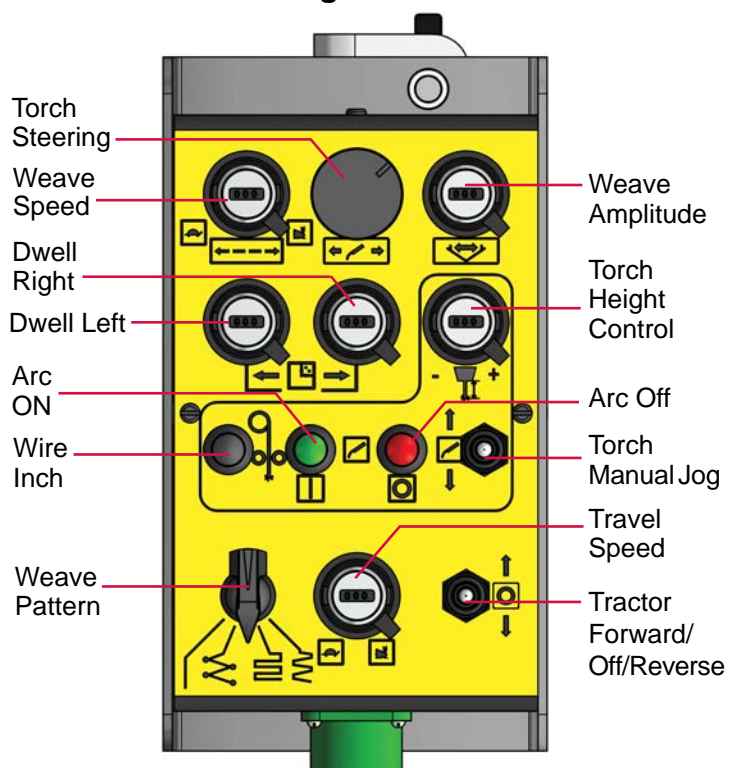
Pendant Control

The Universal Bug-O-Matic features a remote control pendant which allows the operator to run the machine from up to 10 feet (3 m) away. The pendant can be clamped to the machine handle for easy storage or transport.

Standard Pendant



Automatic Height Control Pendant

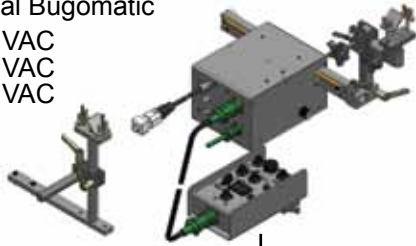


Universal Bugomatic Options

1 CONTROL MODULES

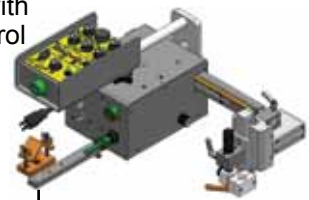
Standard Universal Bugomatic

- BUG-5700** 120 VAC
- BUG-5702** 240 VAC
- BUG-5704** 42 VAC



Universal Bugomatic with Automatic Height Control

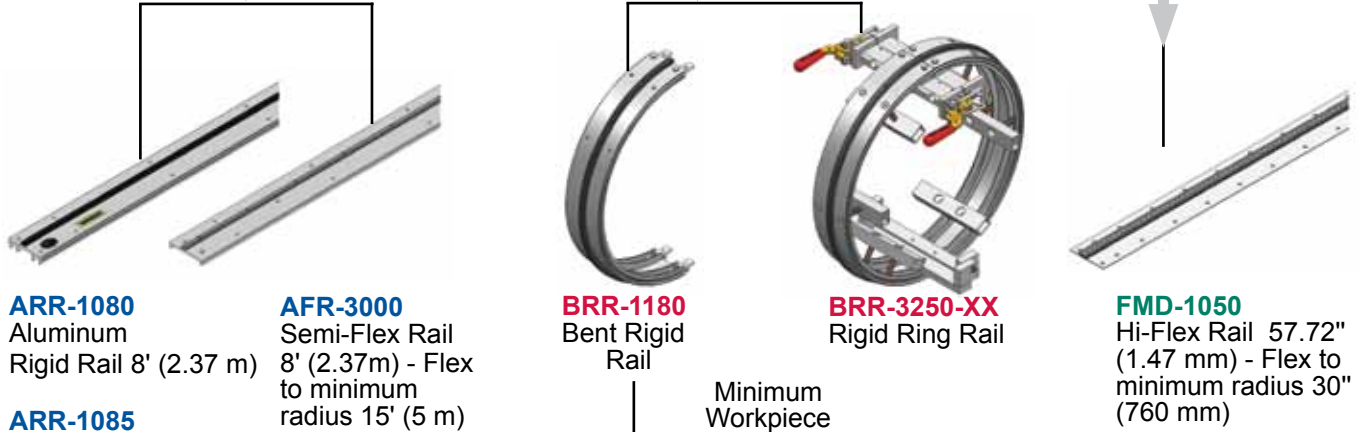
- BUG-6550** 120 VAC
- BUG-6552** 240 VAC
- BUG-6554** 42 VAC



2 CARRIAGES



3 RAILS



ARR-1080
Aluminum
Rigid Rail 8' (2.37 m)

AFR-3000
Semi-Flex Rail
8' (2.37m) - Flex
to minimum
radius 15' (5 m)

BRR-1180
Bent Rigid
Rail

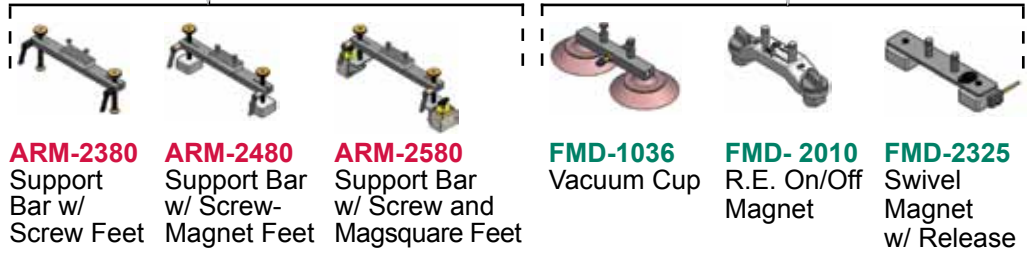
Minimum
Workpiece
Diameter
9" (230 mm)

BRR-3250-XX
Rigid Ring Rail

FMD-1050
Hi-Flex Rail 57.72"
(1.47 m) - Flex to
minimum radius 30"
(760 mm)

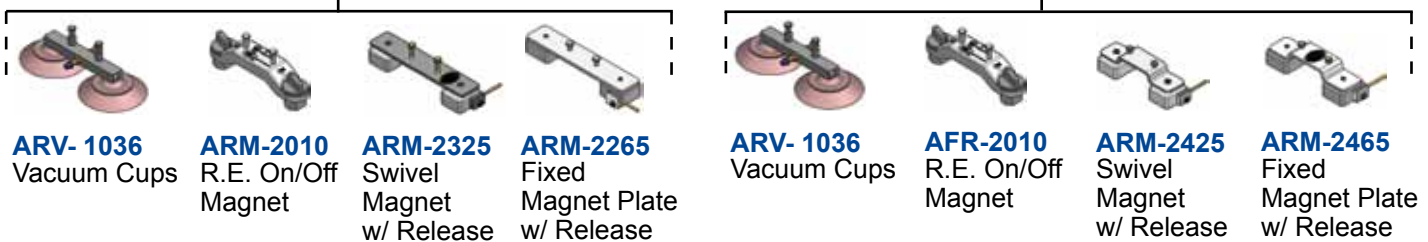
ARR-1085
Aluminum
Rigid Rail 4' (1.18 m)

4 ATTACHMENTS



ARM-2380 Support Bar w/ Screw Feet
ARM-2480 Support Bar w/ Screw-Magnet Feet
ARM-2580 Support Bar w/ Screw and Magsquare Feet

FMD-1036 Vacuum Cup
FMD-2010 R.E. On/Off Magnet
FMD-2325 Swivel Magnet w/ Release



ARV-1036 Vacuum Cups
ARM-2010 R.E. On/Off Magnet
ARM-2325 Swivel Magnet w/ Release
ARM-2265 Fixed Magnet Plate w/ Release

ARV-1036 Vacuum Cups
AFR-2010 R.E. On/Off Magnet
ARM-2425 Swivel Magnet w/ Release
ARM-2465 Fixed Magnet Plate w/ Release

For more information on vacuum cups, magnets and rails, please see the corresponding rail page in the "Rails and Attachments" brochure in order to match the correct attachments with your rails.



UNIVERSAL BUG-O-MATIC

The **Universal Bug-O-Matic** is operator friendly and produces precise, accurate welds. The remote pendant allows the operator to produce repeatable welds with pre-set parameters which increases production, improves quality and workers environment.

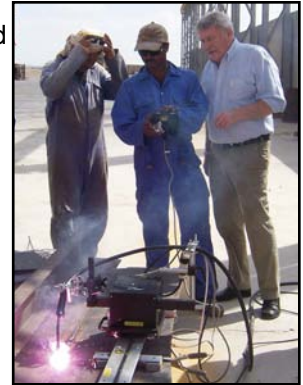
Technical Data:

Universal Bug-O-Matic

Power Requirements:	BUG-5700 120 VAC/50-60/1 BUG-5702 240 VAC/50-60/1 BUG-5704 42 VAC/50-60/1
Linear Speed:	3-70 ipm (75-1750 mm/m)
Weave Speed:	4-100 ipm (100-2500 mm/m)
Dwell Time:	0-3 seconds, left and right
Weave Width:	0.1-2" (2.5-50 mm)
Steering:	2" (50 mm) left and right of center 4" (100 mm) total
Load Capacity:	30 lbs. (14 kg)
Net Weight:	28 lbs. (13 kg)
Shipping Weight:	33 lbs. (15 kg)

Universal Bug-O-Matic With Auto Height Control

Power Requirements:	BUG-6550 120 VAC/50-60/1 BUG-6552 240 VAC/50-60/1 BUG-6554 42 VAC/50-60/1
Linear Speed:	3-70 ipm (75-1750 mm/m)
Weave Speed:	4-100 ipm (100-2500 mm/m)
Dwell Time:	0-3 seconds, left and right
Weave Width:	0.1-2" (2.5-50 mm)
Steering:	2" (50 mm) left and right of center 4" (100 mm) total
Load Capacity:	30 lbs. (14 kg)
Net Weight:	36 lbs. (16 kg)
Shipping Weight:	41 lbs. (19 kg)



Dimensions:

